

VI-4062
VERTICALE MIS Rod Indicator

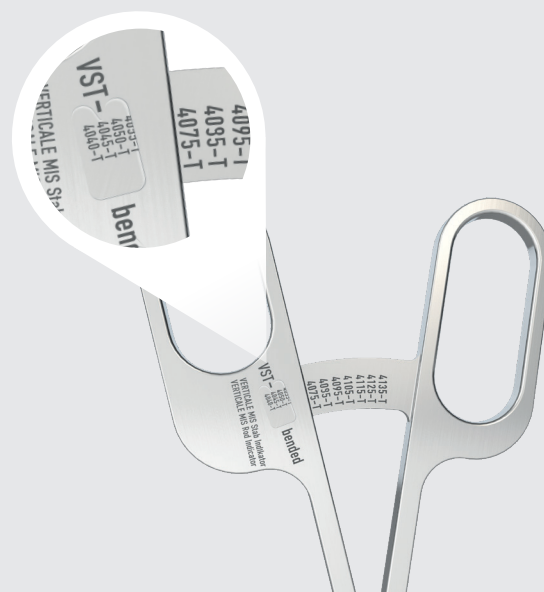


Various rod lengths are available.
All VERTICAL MIS Rods have a conical tip for application that is gentle on tissue. By default, the system comes with straight and curved titanium rods and straight CoCr rods.

The required rod length is determined using the VERTICAL MIS Rod Indicator.
The shafts of the rod indicator are inserted into the two terminal VERTICAL MIS Working Towers until the shaft tips are positioned in the pedicle screw heads.
Monoaxial screws may only be used to a limited extent.
Attention must be paid to ensure that the screws are correctly aligned with each other.
Care must be taken to ensure that the working towers do not cross each other, e.g. in the lower lumbar region.



The appropriate rod for the instrumentation can be read off at the upper working end of the rod indicator. The rod indicator has a scale on both sides which makes it suitable for both curved and straight rods.



NOTE: If the display indicates between two implants, the larger implant must be selected.

 D30003

 D30049

D30240.a.EN
28.10.2020

 Silony Medical Europe GmbH

An der Weide 27-29
28195 Bremen, Germany
Tel +49 421 24 69 56 0
Fax +49 421 24 69 56 55

 Silony Medical GmbH

Leinfelder Straße 60
70771 Leinfelden-Echterdingen, Germany
Tel +49 711 78 25 25 0
Fax +49 711 78 25 25 11

www.silony-medical.com

MADE IN GERMANY